



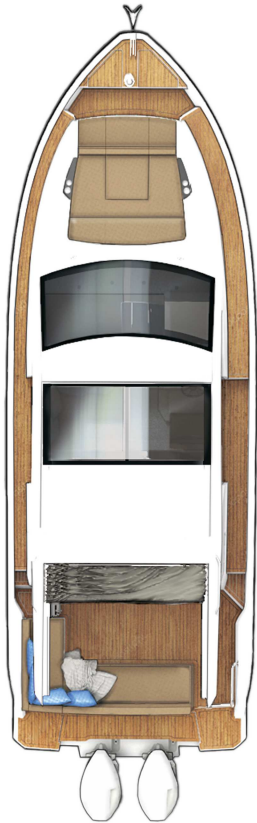
## SPECIFICATION C335v

### PRINCIPAL DIMENSIONS according to ISO 8666

Length Overall (Lmax)	10.31 m	33' 10"
Length Overall (Lmax) - ext. platf.	11.01 m	36' 1"
Length of Hull (LH)	10.07 m	33' 0"
Beam (BH)	3.50 m	11' 6"
Draught (Tmax)	0.89 m	2' 11"
Air Height	3.48 m	11' 5"
Fuel capacity	570 l	125 UK gal
Water capacity	220 l	48 UK gal
Displacement	7.27 t	7.16 UK t
CE Category	B	B
Max. persons	8	8



\*Max. outboard horse power: 2x300 hp; max. speed allowed: 40 knots. SEALINE reserves the right to change specifications in line with the company policy of improvement through research and development. All measurements/figures approximate. Errors and omissions are excepted. Specification and material can be changed without notice. Please check with your dealer for a full list of inclusions. Valid from 2021.11.21.



ROOF  
standard



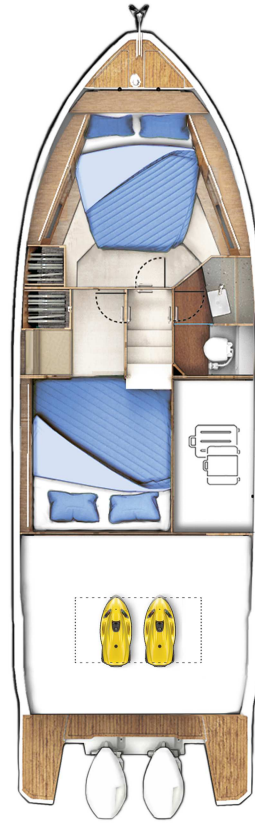
MAIN DECK  
optional  
with fixed cockpit  
table and extended  
bathing platform

C1



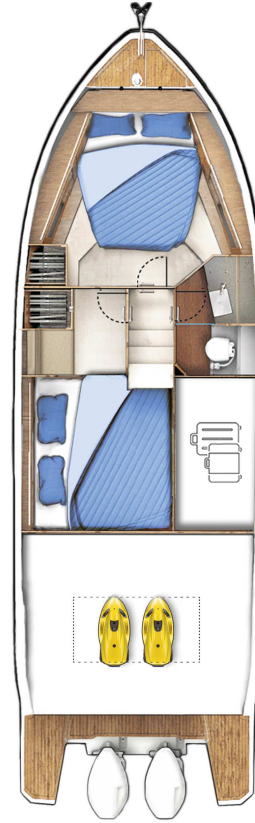
MAIN DECK  
optional  
with cockpit table to  
be transformed into  
sunpad and extended  
bathing platform

C1



LOWER DECK  
standard

A1



LOWER DECK  
optional

A1

B2

## HULL

- GRP hull with sandwich construction, isophthalic gelcoat, colour: STAR WHITE, 1st layer vinyl ester resin
- Waterline, isophthalic gelcoat, colour: BLACK
- Aft pillar vinyl wrapped in GREY with SEALINE logo
- 3 hull windows (master cabin port side and starboard side, VIP cabin port side)
- 3 hull windows with openable porthole (VIP cabin port side, toilet and master cabin starboard side)

## DECK & COCKPIT

- GRP deck with antislip surface, isophthalic gelcoat, colour: STAR WHITE, 1st layer vinyl ester resin, anchor locker self draining, anchor arm stainless steel
- Hull fender strip in black rubber
- SEALINE steering wheel
- Full windscreen with pantograph wipers and screen wash
- Panoramic full glass windows and one fixed skylight in saloon
- Bifold door between cockpit and galley and tilting window to enlarge galley into cockpit
- Bathing platform in fiberglass, bathing ladder with handrail and bathing shower with hot and cold water and opening stainless steel gate.
- Stainless steel pulpit, 4 stainless steel mooring cleats, stainless steel handrails
- Seating "L"-shaped bench with fixed backrest at stern and port side with storage and foldable teak bar, manual bimini
- Bench at bow, GRP surface
- Manual engine hatch

## PROPULSION

- Engine battery preparation including main switches
- Fuel tank, capacity: 570 l

## ELECTRICAL EQUIPMENT

- 12 V and 230 V electric system with 230 V shore power connection. Sockets in saloon (2), master cabin (1), guest cabin (1), galley (2), toilet (1) and 12 V on dashboard (1)
- Batteries-Service: 2 x 160 Ah
- Country Version: EU / AUS
- Manual toilet
- Light in cabins, saloon and galley with dimmer. Dimmable indirect lights and reading lights in cabins. Lights in toilet, cockpit and storage room.
- Holding tank (85 l)
- Water tank (220 l) with gauge, fresh water pump
- Bilge pumps: automatic electric (2) and manual emergency bilge pump in cockpit (1)

## NAVIGATION & INSTRUMENTS

- Standard dashboard
- Compass
- Navigation lights

## LAYOUT & INTERIOR

- A1: Master cabin with double berth, 1 wardrobe, drawers underneath the bed, various lockers and storage boxes. 3 skylights, one openable. Fully equipped head with separated shower stall, handheld shower and comfort seat with fiberglass cover. Manual toilet.
- B1: Guest cabin with twin berths, 1 wardrobe, 1 seat and storage
- C1: Saloon with "L"-shaped sofa and pilot seat. Galley with stowage, fridge, gas stove - two-burner, 1 gas oven and sink with draining basin.
- Saloon table with fixed leg
- Counter tops in galley, in BISTRO material (according to colour card)

## UPHOLSTERY & WOOD

- Interior upholstery scheme CASABLANCA, colour: PEARL WHITE (according to colour card)
- Exterior seating material in SARDINIA, colour: GULL WING (according to colour card)
- Upholstery helmsman seat material in CASABLANCA, colour: PEARL WHITE (according to colour card)
- Standard mattresses in all cabins
- Interior furniture in high quality marine plywood: MADISON WOOD (according to colour card)
- Floorboard in saloon, galley and cabins - AUSTRALIAN ACACIA (according to colour card)
- Heads flooring - wood style

## TRANSPORT

- Declaration of Conformity
- Safety manual
- Identified locations for hand held fire extinguishers - (hand held fire extinguishers are not supplied), SEALINE Owner's Manual in SEALINE document bag